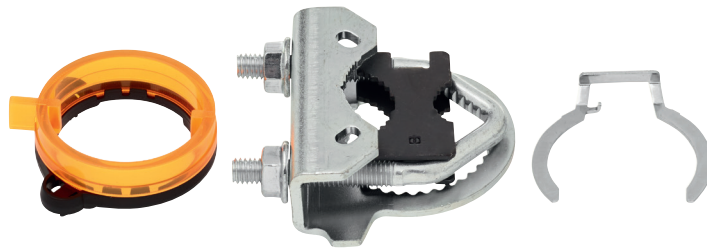


Spindle clamp

- one-sided for NM..A
- clamping range 8..26 mm with insert

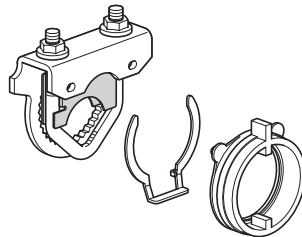


Technical data

Weight	Weight	0.10 kg
	Packaging size	Multi-pack 20 pcs.

Product features

Used materials	Galvanised steel
	Thermo-plastic material
Application	Suitable for LMQ..A, NM..A



∅ ≥10.0 mm	∅ ≥16.0 mm	∅ ≥8.0 mm
⊕ 12.7 mm 1/2"	⊕ 19.0 mm 3/4"	⊕ 25.4 mm 1"
∅ ≤18.0 mm	∅ ≤22.0 mm	∅ ≤26.7 mm