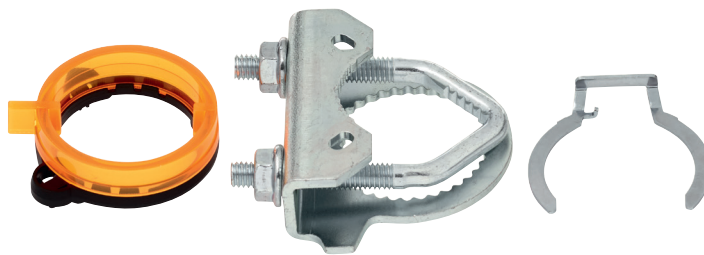


Spindle clamp

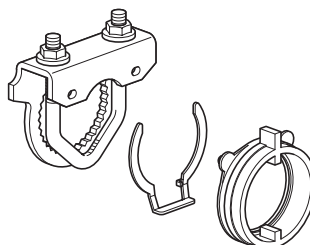
- one-sided for NM..A, SM..A
- clamping range 8..26 mm

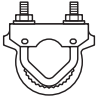

Technical data

Weight	Weight	0.085 kg
	Packaging size	Multi-pack 20 pcs.

Product features

Used materials	Galvanised steel
	Thermo-plastic material
Application	Suitable for LMQ..A, NM..A, NMQ..A, SM..A, SMD..A




⌀ ≥8.0 mm
⊕ 25.4 mm 1"
⌀ ≤26.7 mm