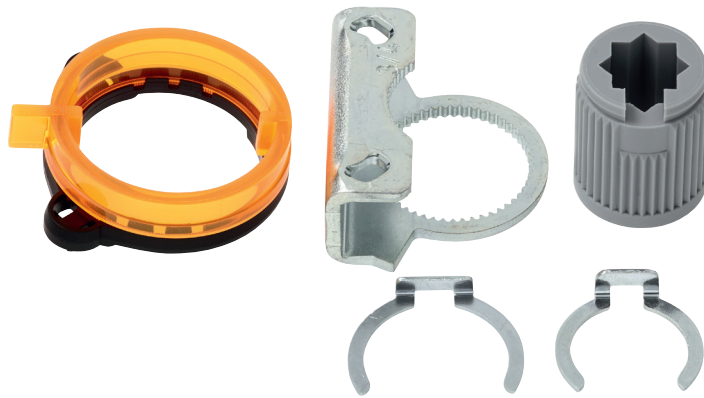


Form fit insert 10x10 mm

- for LM..A, TM..A
- with angle of rotation limiter and position indication

**Technical data**

Weight	Weight	0.090 kg
	Packaging size	Multi-pack 20 pcs.

Product features

Used materials	Thermo-plastic material Galvanised steel
Application	Suitable for LM..A, LMC..A, TMC..A

